

2025

Recycling
Collection Calendar



Ville de **SAINTE-ANNE**
Town of **STE. ANNE**



TOWN OF STE. ANNE

14 Centrale Avenue
Sainte-Anne, Manitoba

T: 204.422.5293
www.steannemb.ca



EMTERRA[®]
Environmental

Thinking Innovatively
Transforming waste to resources[®]

P: 204.772.0770

WWW.EMTERRA.CA

@EMTERRAGROUP





Ville de **SAINTE-ANNE**
Town of **STE. ANNE**



2025

Set all carts
at the curb
by **7 AM!**

Recycling Collection Schedule

Your recycling collection provider:



EMTERRA
Environmental

Thinking Innovatively
Transforming waste to resources*

■ Tuesday collection

JANUARY 2025						
S	M	T	W	T	F	S
			1	2	3	4
5	6	7	8	9	10	11
12	13	14	15	16	17	18
19	20	21	22	23	24	25
26	27	28	29	30	31	

FEBRUARY 2025						
S	M	T	W	T	F	S
						1
2	3	4	5	6	7	8
9	10	11	12	13	14	15
16	17	18	19	20	21	22
23	24	25	26	27	28	

MARCH 2025						
S	M	T	W	T	F	S
						1
2	3	4	5	6	7	8
9	10	11	12	13	14	15
16	17	18	19	20	21	22
23	24	25	26	27	28	29
30	31					

APRIL 2025						
S	M	T	W	T	F	S
		1	2	3	4	5
6	7	8	9	10	11	12
13	14	15	16	17	18	19
20	21	22	23	24	25	26
27	28	29	30			

MAY 2025						
S	M	T	W	T	F	S
				1	2	3
4	5	6	7	8	9	10
11	12	13	14	15	16	17
18	19	20	21	22	23	24
25	26	27	28	29	30	31

JUNE 2025						
S	M	T	W	T	F	S
1	2	3	4	5	6	7
8	9	10	11	12	13	14
15	16	17	18	19	20	21
22	23	24	25	26	27	28
29	30					

JULY 2025						
S	M	T	W	T	F	S
		1	2	3	4	5
6	7	8	9	10	11	12
13	14	15	16	17	18	19
20	21	22	23	24	25	26
27	28	29	30	31		

AUGUST 2025						
S	M	T	W	T	F	S
					1	2
3	4	5	6	7	8	9
10	11	12	13	14	15	16
17	18	19	20	21	22	23
24	25	26	27	28	29	30
31						

SEPTEMBER 2025						
S	M	T	W	T	F	S
	1	2	3	4	5	6
7	8	9	10	11	12	13
14	15	16	17	18	19	20
21	22	23	24	25	26	27
28	29	30				

OCTOBER 2025						
S	M	T	W	T	F	S
			1	2	3	4
5	6	7	8	9	10	11
12	13	14	15	16	17	18
19	20	21	22	23	24	25
26	27	28	29	30	31	

NOVEMBER 2025						
S	M	T	W	T	F	S
						1
2	3	4	5	6	7	8
9	10	11	12	13	14	15
16	17	18	19	20	21	22
23	24	25	26	27	28	29
30						

DECEMBER 2025						
S	M	T	W	T	F	S
	1	2	3	4	5	6
7	8	9	10	11	12	13
14	15	16	17	18	19	20
21	22	23	24	25	26	27
28	29	30	31			

ACCEPTABLE ITEMS



RECYCLE RIGHT: These items are acceptable in your recycling bin.
Ensure all items are **EMPTY AND CLEAN**.

RECYCLE RIGHT, TOWN OF STE. ANNE

Include these items (rinsed and free from grease, food and other residue) in your single stream recycle bin - no sorting or bagging required.

PLASTICS

WHAT **EMPTY AND CLEAN** Plastics labeled #1-7 including bottles, lids, containers, take-out food containers, clamshells and trays, #5 and #6 single serve coffee pods.



GLASS

WHAT **EMPTY AND CLEAN** Bottles and Jars (All Colors).



CARTONS

WHAT **EMPTY AND CLEAN** Boxed Food and Beverage Cartons, Paper Cups.



METAL

WHAT **EMPTY AND CLEAN** Aluminum and Steel Cans, Aluminum Foil.



PAPER

WHAT Newspaper, Magazines, Printed Paper and Shredded Paper.

HOW Shredded paper in a clear plastic bag. This is the only item that should be bagged.



CARDBOARD

WHAT **FLATTENED AND DRY** Cardboard no larger than 4' x 4' x 1'.



HOW TO PLACE YOUR RECYCLING CART FOR COLLECTION

Place your cart - with the back wheels towards the curb or at the edge of the road; close lid.

Point your cart - the cart lid opens upwards from the centre of the road or lane.

Space your cart - leave one arm's length clearance (one meter or 39 inches) on all sides of each cart. This is to allow the collection truck enough room to grab your cart.

Look up - avoid placing your cart under hydro or telephone wires, basketball hoops, awning and tree limbs.

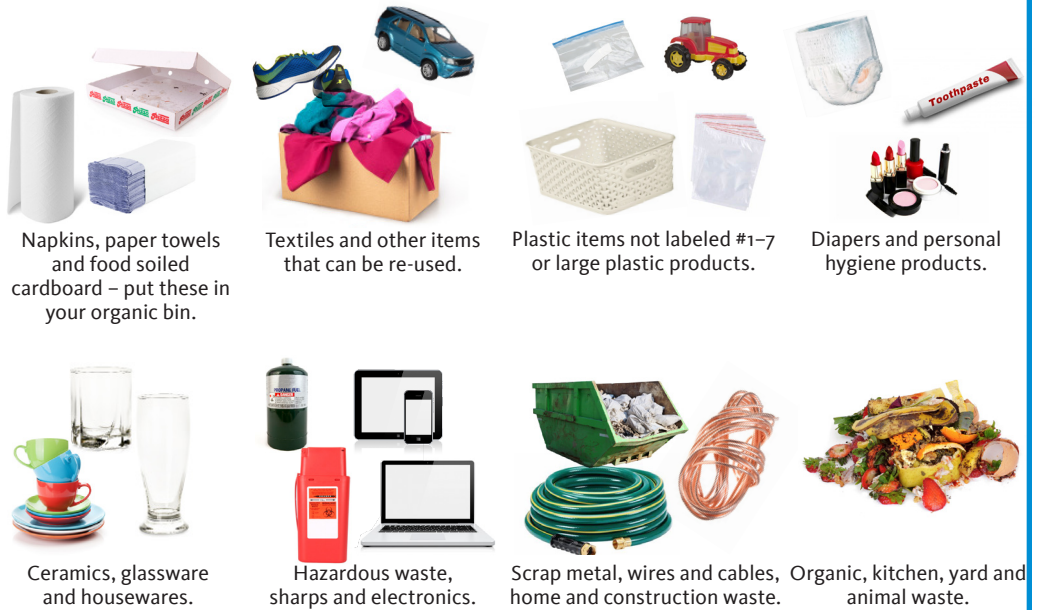
In Winter - clear snow away from the surrounding area in which you place your cart at the curb or lane. Do not place carts behind or on top of snowbanks; clear snow and ice off lids so they will open easily when emptied.



UNACCEPTABLE ITEMS

These items require alternative handling.

THESE ITEMS ARE NOT ACCEPTED WITH YOUR RECYCLING.



Napkins, paper towels and food soiled cardboard – put these in your organic bin.

Textiles and other items that can be re-used.

Plastic items not labeled #1-7 or large plastic products.

Diapers and personal hygiene products.

Ceramics, glassware and housewares.

Hazardous waste, sharps and electronics.

Scrap metal, wires and cables, home and construction waste.

Organic, kitchen, yard and animal waste.



RECYCLE RIGHT!

About one third of household waste is made up of packaging and printed paper that is recyclable. By separating recyclables from waste and putting them at the curb for collection, you are contributing to a healthier, cleaner environment and community.



RESPONSIBLE DISPOSAL!

Every year, Emterra Environmental ships 500,000 MT of recyclables to end markets to be re-manufactured into new green products. Be part of the solution.

We believe everything has value. If an item you are looking to dispose of is not listed, find out how to dispose of it properly, visit: www.gov.mb.ca/sd/wastewise/index.html



EMTERRA
Environmental

Thinking Innovatively
Transforming waste to resources*

**EMTERRA ENVIRONMENTAL
CUSTOMER SERVICE:**

204.772.0770
www.emterra.ca
@EmterraGroup

